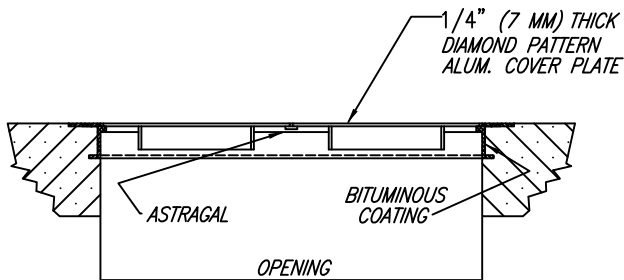
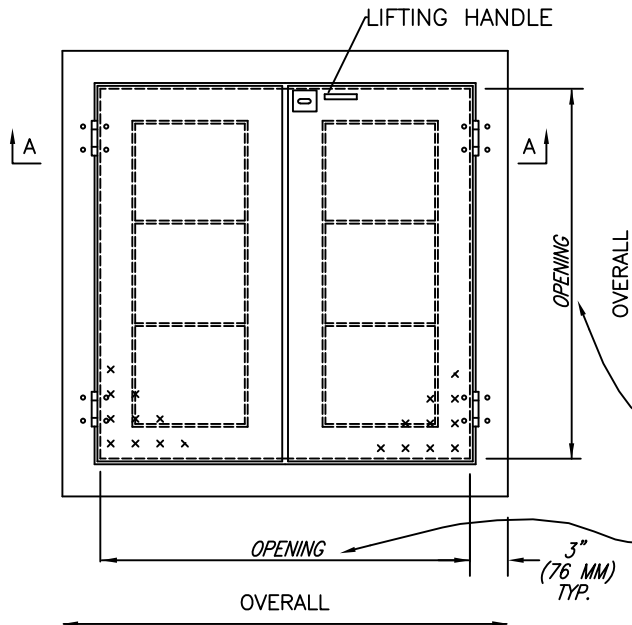


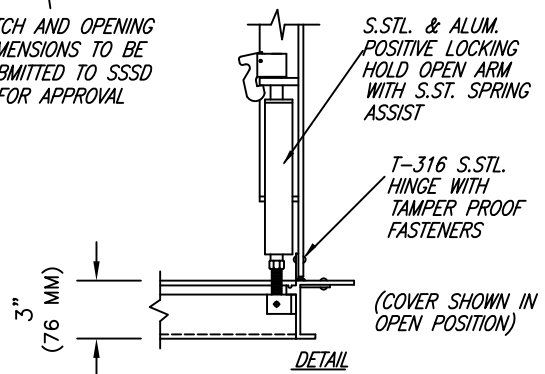
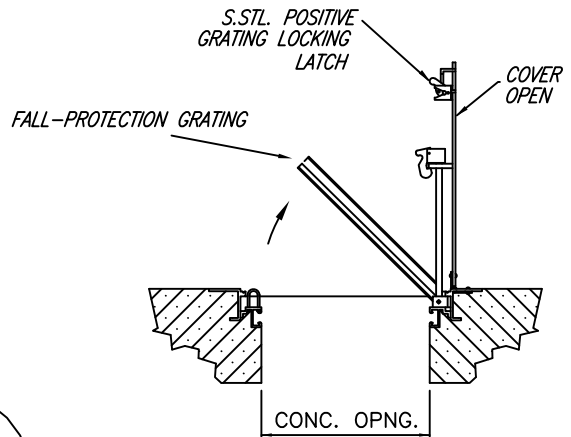
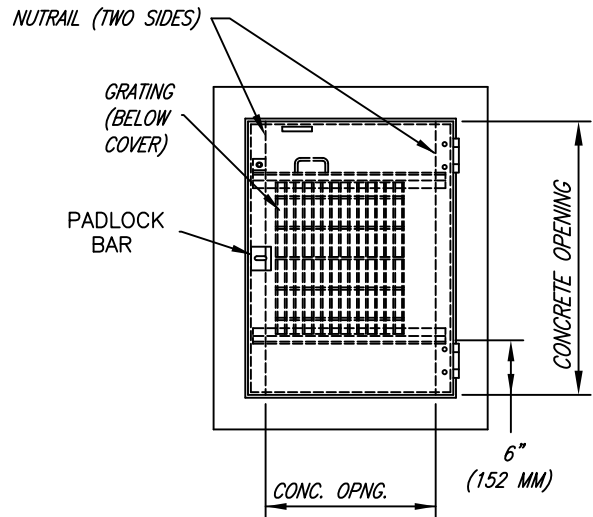
# CONSTRUCTION DETAIL NO. 25

## STANDARD FEATURES:

- AUTO-LOCK T-316 STAINLESS STEEL HOLD OPEN ARM WITH RELEASE HANDLE
- T-316 STAINLESS STEEL HINGES AND ATTACHING HARDWARE
- NON-CORROSIVE PAD LOCK BAR LOCKING MECHANISM
- STAINLESS STEEL COMPRESSION SPRING ASSIST
- BUILT-IN NEOPRENE CUSHION/GASKET
- NON-OZONE DEPLETING BITUMINOUS COATING
- DOUBLE LEAF CONSTRUCTION
- 300 LBS. PER SQ. FT. LOAD RATING (1464 KG. PER SQ. METER LOAD RATING)
- EXTRUDED ALUMINUM FRAME
- RECESSED LIFTING HANDLE
- ALUMINUM FALL-PROTECTION GRATING
- LIFETIME GUARANTEE
- AS MANUFACTURED BY HALLIDAY, BILCO, US FOUNDRY, OR APPROVED EQUAL.



SECTION A-A



HATCH AND OPENING DIMENSIONS TO BE SUBMITTED TO SSSD FOR APPROVAL

S.S.T. & ALUM. POSITIVE LOCKING HOLD OPEN ARM WITH S.S.T. SPRING ASSIST

T-316 S.S.T. HINGE WITH TAMPER PROOF FASTENERS

(COVER SHOWN IN OPEN POSITION)



HATCH WITH FALL-PROTECTION GRATING

SCALE: NONE REVISION DATE: 6/28/2022