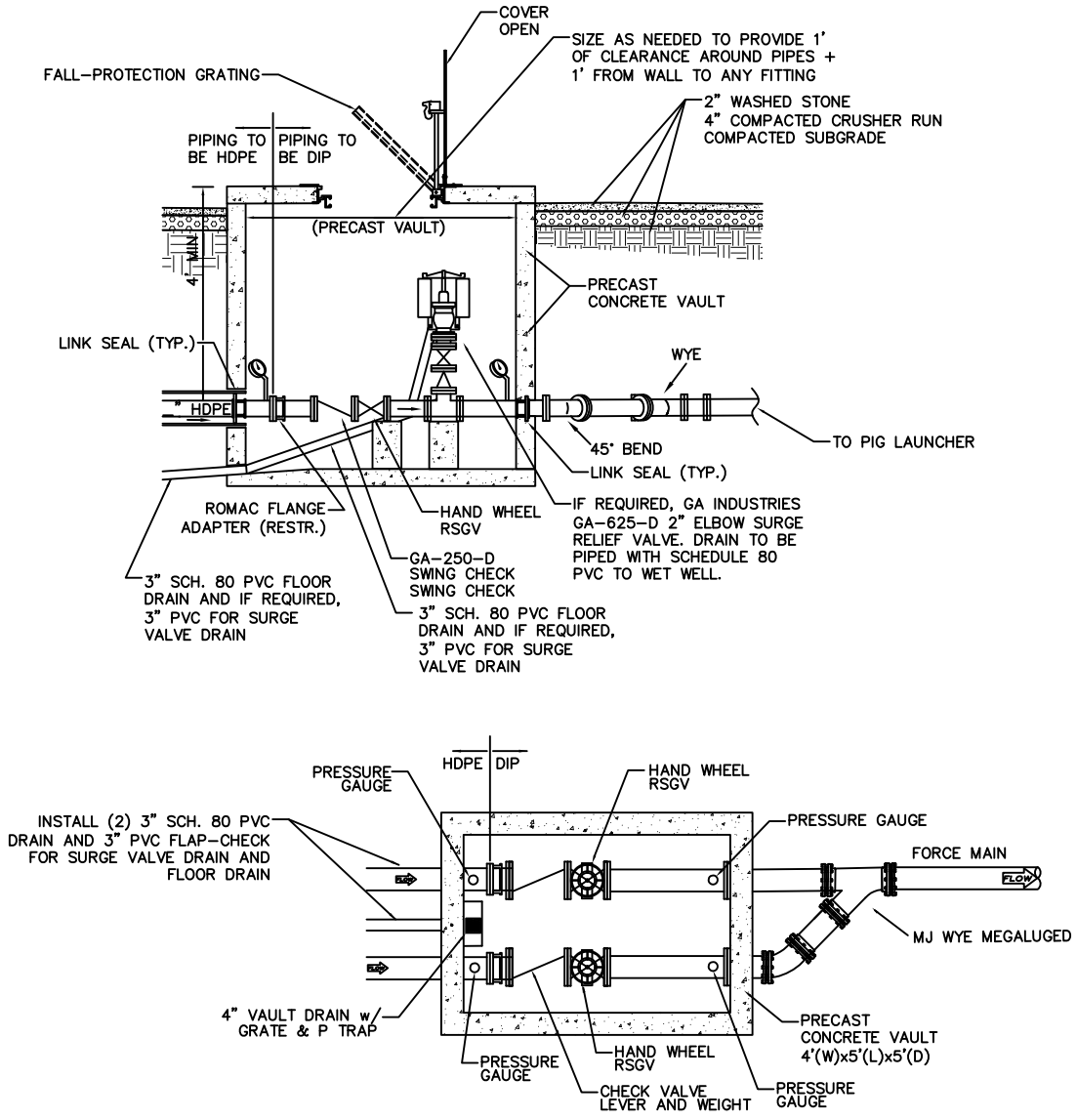


CONSTRUCTION DETAIL NO. 24a

- NOTE:**
- SEE DETAIL SHEETS FOR HATCH DETAILS.
 - INSTALL 4" COMPACTED CRUSHER RUN OVER ALL AREAS OF DISTURBED EARTH. INSTALL 2" WASHED STONE IN VICINITY OF WET WELL AND VAULT TO PROVIDE DRAINAGE DURING WASHDOWN.

NOTE: VERIFY ALL ELEVATIONS PRIOR TO FABRICATION



NOTE: ALL PIPE AND FITTINGS IN VALVE VAULT SHALL BE SHOWN DIMENSIONALLY CORRECT, AND VAULT AND HATCH DIMENSIONS TO BE PROVIDED.



SUBMERSIBLE PUMP STATION VALVE VAULT

VALVE VAULT NTS

SCALE: NONE REVISION DATE: 6/28/2022