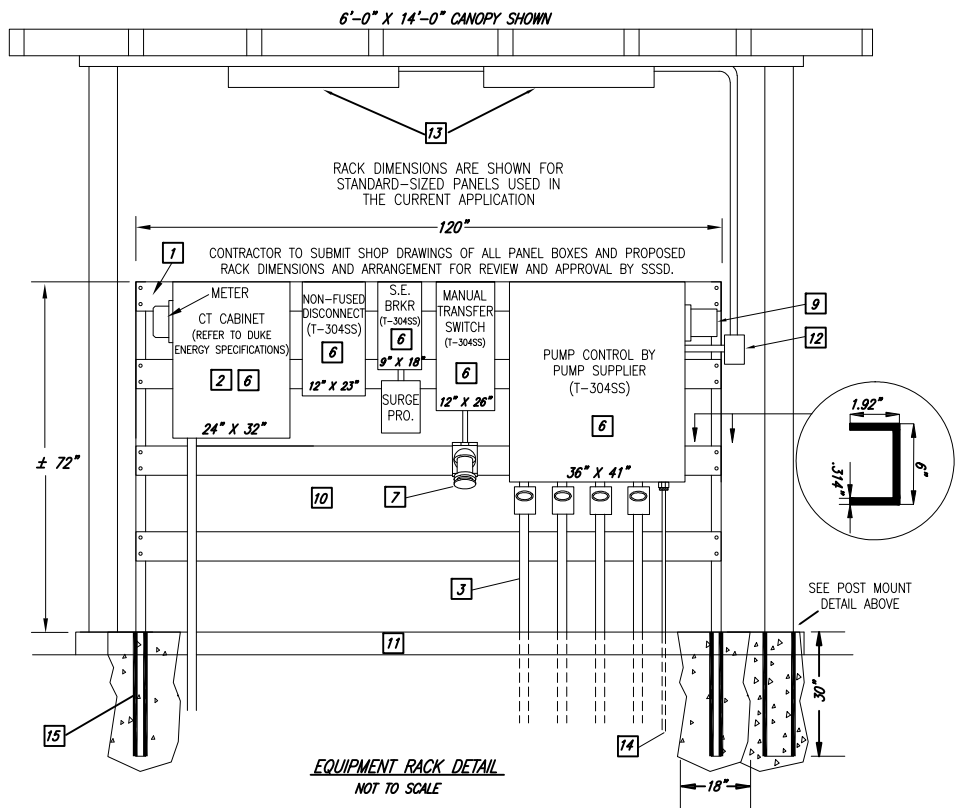
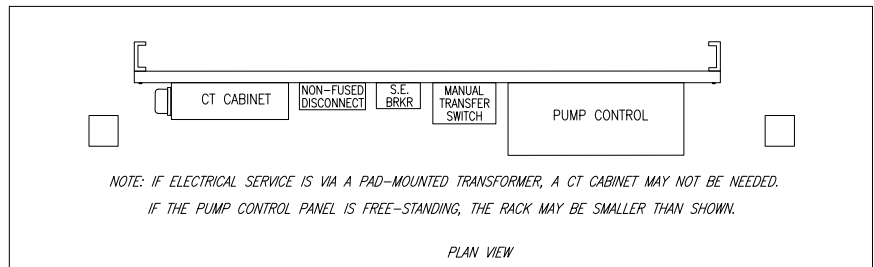



CONSTRUCTION DETAIL NO. 27a

- 1- 6" & 4" STANDARD ALUMINUM CHANNEL (SEE SECTION). PROVIDE 316SS HARDWARE. PROVIDE CROSS MEMBERS NOTCHED AND BOLTED TO UPRIGHTS. SHOP DRAWING OF RACK TO BE SUBMITTED FOR APPROVAL SHOWING INSTALLED LOCATION OF ALL PANELS, DISCONNECTS, SWITCHES AND COMPONENTS.
- 2- DUKE ENERGY WILL PROVIDE NEW 3-PHASE SERVICE TO METER AS SHOWN. CONTRACTOR TO SUPPLY ALL OTHER CONTROL PANEL COMPONENTS TO PROVIDE A FULLY-OPERATIONAL PUMP STATION.
- 3- PROVIDE TWO NEW 3" PVC CONDUITS FOR PUMP CABLES AND TWO NEW SEPARATE 3" PVC CONDUITS FOR FLOAT CABLES EXTENDING FROM JUNCTION BOX TO WET WELL.
- 4- CONDUITS AND SEAL OFFS FROM JUNCTION BOX TO MAIN CONTROL PANEL OR OTHER PANELS TO BE SIZED ONE SIZE LARGER THAN REQUIRED BY NEC FOR WIRE SIZE.
- 5- ALL SEAL FITTINGS TO BE SEALED WITH NON-HARDENING DUCT SEAL (SEE SPECIFICATIONS)
- 6- REFER TO SPECIFICATIONS FOR PUMP STATION CONTROL PANEL ENCLOSURES, HARDWARE AND COMPONENTS SHOP DRAWINGS TO BE SUBMITTED FOR ALL CONTROL PANEL INTERNAL AND EXTERNAL COMPONENTS AND ALL RACK-MOUNTED FIXTURES. CONTROL PANEL SHOP DRAWING TO INCLUDE DRAWING SHOWING LOCATION OF ALL INTERNAL AND EXTERNAL COMPONENTS. AND ITEMIZED BILL OF MATERIALS LISTING.
- 7- REFER TO SPECIFICATIONS FOR GENERATOR RECEPTACLE WHICH IS COMPATIBLE WITH SPARTANBURG WATER GENERATOR PLUG AND INCLUDES 45° ANGLE MOUNTING FIXTURE.
- 8- EXCEPT AS SPECIFICALLY DIRECTED HEREIN, ALL CONDUITS TO BE SIZED PER CURRENT NEC REQUIREMENTS OR LOCAL CODES (WHICHEVER IS MORE-STRINGENT). ABOVE-GROUND SHALL BE SCHEDULE 80 PVC AND BELOW-GROUND CONDUITS SHALL BE MINIMUM SCHEDULE 40 PVC. CONDUITS BETWEEN ALL PANEL BOXES SHALL BE RIGID ALUMINUM
- 9- ALARM LIGHT MOUNTED ON SIDE OF PANEL (THERE SHALL BE NO PENETRATIONS IN THE TOP OF THE PANEL)
- 10- SURGE PROTECTION DEVICE AS SPECIFIED SHALL BE MOUNTED AS CLOSE TO THE TRANSFER SWITCH AS POSSIBLE AND SHALL BE PROTECTED WITH A MINIMUM 30A CIRCUIT BREAKER UNLESS OTHERWISE PROVIDED BY THE MANUFACTURER.
- 11- 6"-THICK REINFORCED CONCRETE PAD
- 12- 15A WEATHER-PROOF LIGHT SWITCH
- 13- iBRIGHT LED VAPOR PROOF FIXTURE. VP4FT5K-10 50WATT 5000 LED LIGHTS.
- 14- PROVIDE 20A GFCI BREAKER, CONDUIT, AND RELATED WIRING TO POWER HEAT TAPE IN EXISTING BACKFLOW PREVENTER ENCLOSURE.
- 15- ALUMINUM TO BE COATED WITH TWO COATS OF BITUMASTIC SEALANT WHERE EMBEDDED IN OR IN CONTACT WITH CONCRETE.
- 16- SUPPORTS FOR CONDUITS TO BE STAINLESS STEEL UNI-STRUT OR SIMILAR.





**DUPLEX PUMP STATION
ELECTRICAL PANEL, RACK,
AND AWNING DETAIL**

SCALE: NONE REVISION DATE: 6/28/2022